

My Catalogue

Index

32488 Minta Sink mixer 1/2"



ENJOY WATER®

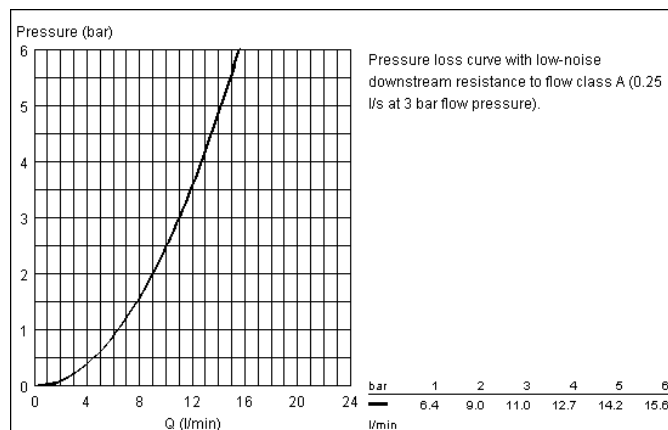
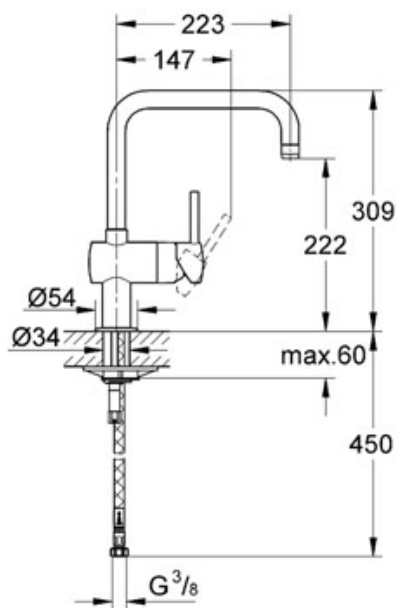
Minta

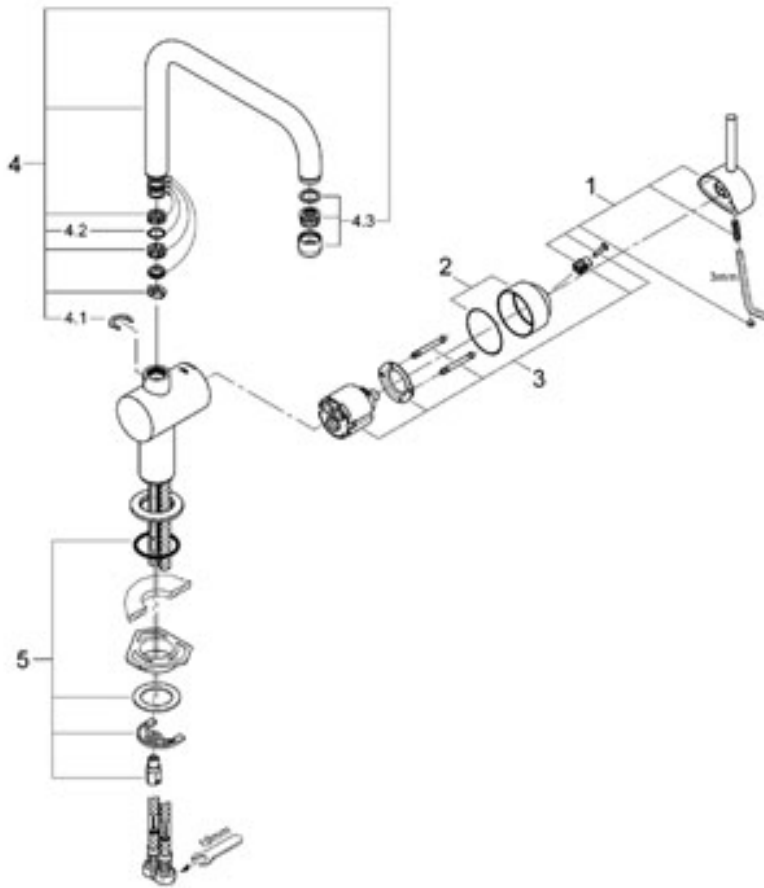


Minta Sink mixer 1/2"

Monobloc installation
GROHE SilkMove 46 mm ceramic cartridge
adjustable flow rate limiter
U spout, swivelling
mousseur aerator (HP)
flexible connection hoses
rapid installation system
optional temp. limiter ref. no. 46 308
Min. recommended pressure 1.0 bar
Balanced hot and cold supplies

Colour chrome
Ref. no. 32488 000





| Nr. | Description | Ref. no. | Amount |
|-------|-----------------------------|-------------|--------|
| 1 | Lever | 46015 000 | 1 |
| 2 | Shield for cross handle | 46025 000 | 1 |
| 3 | Cartridge | 46048 000 | 1 |
| 4 | Biflo spout | 13096 000 | 1 |
| 4.1 | Repl.kit f.cast spout | 46131 000 * | X |
| 4.1.1 | O-Ring Ø13,5 x Ø2,75 | 01285 00M | 20 |
| 4.1.2 | Safety ring | 04853 00M | 5 |
| 4.2 | Flow restrictor 6 l/min | 13928 000 | 1 |
| 4.2.1 | Repl.kit f.aeratorM22x1 and | 45002 000 | 1 |
| 5.1 | Support plate | 05334 000 | 1 |
| 5 | Shank fastening assembly | 46249 000 | 1 |